



Steven Levy Enterprises, Inc.
1412 Pennsylvania
South Houston, Texas 77587
Phone: (713) 910-4337 Fax: (713) 910-2039

Steven Levy Enterprises, Inc. is accepting bids on behalf of our clients for the following material:

Sullair Stationary Air Power System & Silvan Industries Tanks

Sealed Bid Sale

Bidder Information

Company: _____

(Signature) (Printed Name) (Date) (Phone Number)

Inspected Surplus Yes No (Check One)

All items in new condition unless noted "used".

Subject material to be sold on "AS IS / WHERE IS" basis.
 Material is sold FOB Steven Levy Enterprises, Inc. located at 1412 Pennsylvania, South Houston, Texas.

Bid Close: Thursday, August 20th @ 12:00PM.

To inspect material or for additional information contact:

Steven Levy Enterprises, Inc. (713) 910-4337
 Inspection Time 7:30 - 3:00 M-F
 Available for inspection Immediately thru Bid Close
 We are happy to pick up out-of-town buyers at Hobby Airport (HOU)

Seller reserves the right to reject any and all bids. Only the successful bidder will be notified of awards. Payment is due upon notification of award. All sales will be charged sales tax unless resale tax exemption certificate accompanies payment or is on file with Steven Levy Enterprises, Inc. Equipment is to be removed from property within ten (10) days at buyer's expense. Seller description of material is best available information, seller provides no express warranties and/or guarantees as to the quantity, quality, and/or fitness for any use or purpose. Steven Levy Enterprises, Inc. encourages all bidders to inspect material prior to placing bids.

******PLEASE SUBMIT THIS COVER PAGE WITH ALL BIDS******

Please visit our web site www.slevysurplus.com for more available equipment.

System #1

Description: Sullair Stationary Air Power System

MFG: Sullair

Air Compressor Model:1810/A

Desiccant Dryer Model: SSD100-115V

Condition: UNUSED SURPLUS

**see additional pictures below*

Bid: \$ _____



System #1

System #2

Description: Sullair Stationary Air Power System

MFG: Sullair

Air Compressor Model:1810/A

Desiccant Dryer Model: SSD100-115V

Condition: UNUSED SURPLUS

**see pictures below*

Bid: \$ _____



System #2

Please visit our web site www.slevysurplus.com for more available equipment.



SULLAIR.
SERVICE PARTS

MODEL:
1800 / 2200 / 3000

| DESCRIPTION: | P/N |
|--|------------------------------|
| ELEMENT, AIR FILTER | 02250125-372 |
| ELEMENT, FLUID FILTER | 02250155-709 |
| KIT, SEPARATOR | 02250186-214 |
| FILTER, FLUID RETURN LINE | 02250117-782 |
| KIT, AIR INLET VALVE | 02250164-606 |
| KIT, THERMAL VALVE STD. SULLUBE 24KT => 150 PSIG | 02250144-327 02250146-827 |
| KIT, REPAIR STRAINER | 241772 |
| KIT, MINIMUM PRESSURE VALVE | 02250110-988 |
| KIT, PRESSURE REGULATOR | 250019-453 |
| VALVE, BLOWDOWN | 02250049-634 |

*** STD. COMPRESSOR FLUID OPTIONS:

| | |
|---------------------------------|--------------|
| SULLUBE FLUID (5 GAL) | 250022-669 |
| 24KT FLUID (5 GAL) | 02250051-153 |
| CP-4600-32-F FOOD GRADE (5 GAL) | 250029-008 |
| SRF 1/4000 FLUID (5 GAL) | 250019-662 |

*** SEE COMPR. FILL DECAL FOR CORRECT FLUID

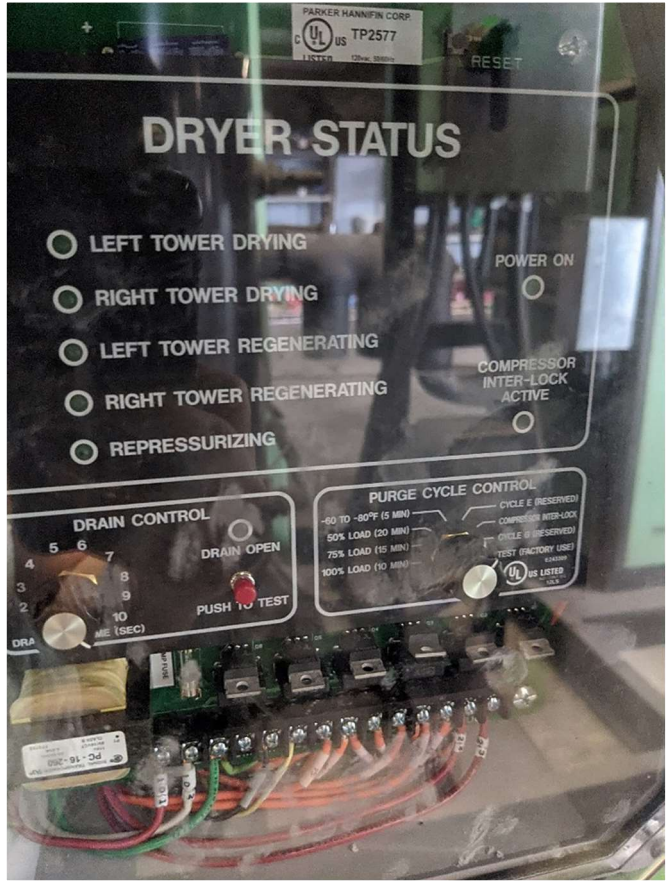
THE ABOVE PARTS SHOULD BE ORDERED FROM A LOCAL SULLAIR DISTRIBUTOR. FOR INFORMATION REGARDING THE LOCATION OF YOUR NEAREST SULLAIR DISTRIBUTOR CONTACT:

www.sullair.com

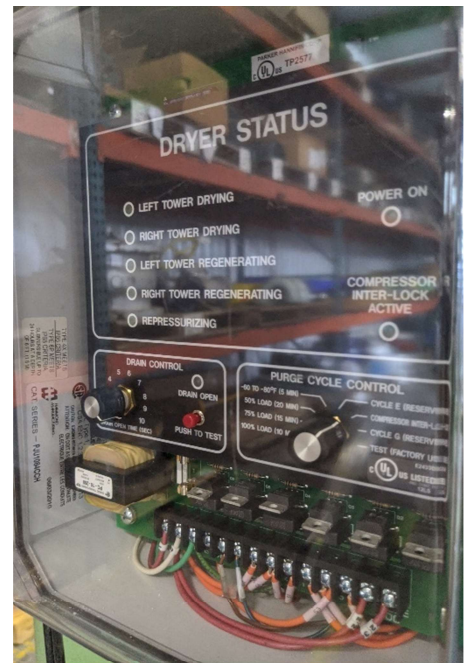
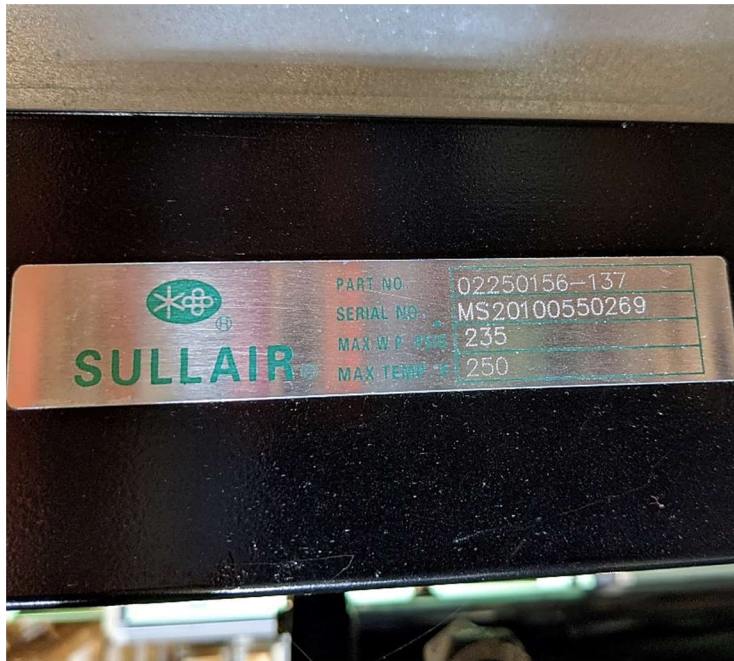
02250186-230



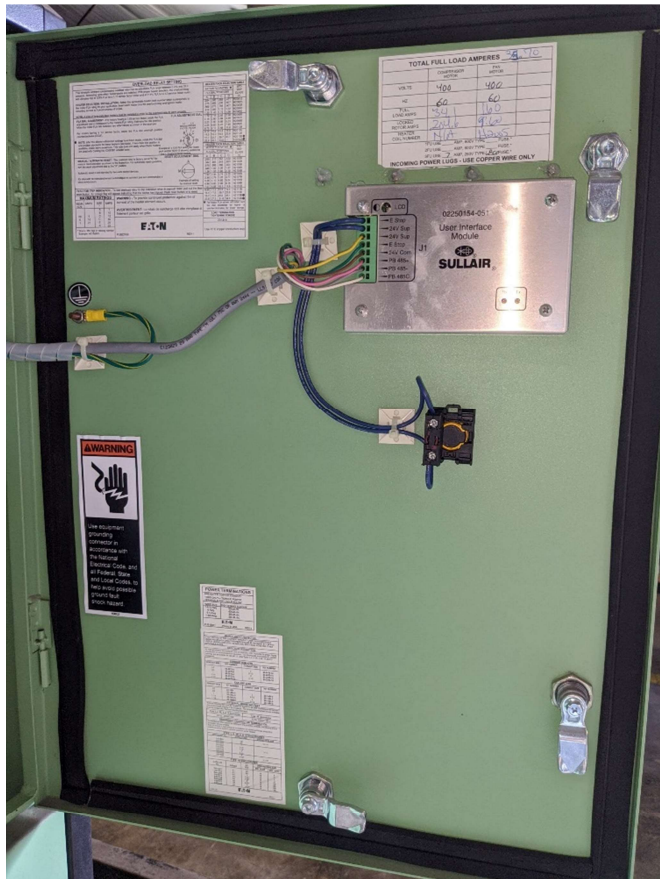
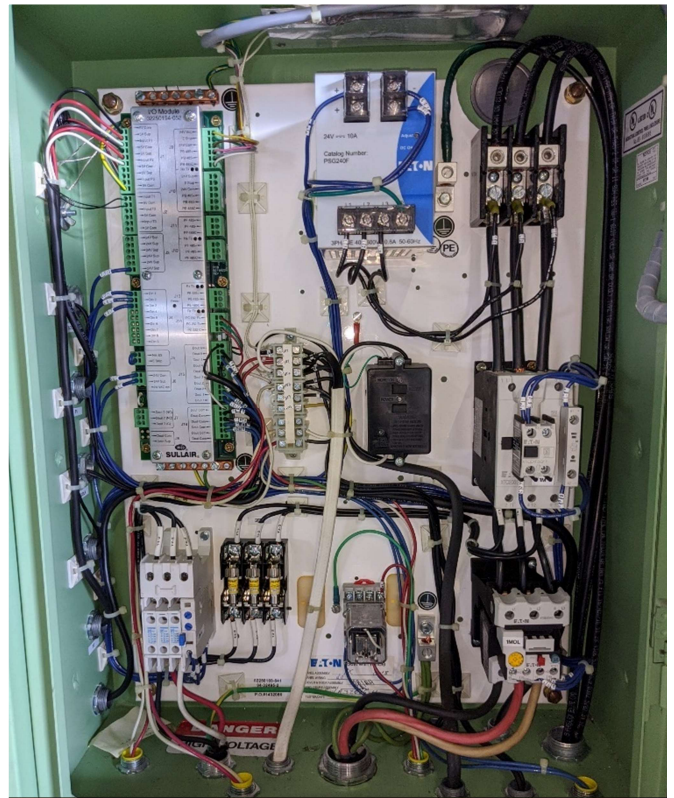
Please visit our web site www.slevysurplus.com for more available equipment.



Please visit our web site www.slevysurplus.com for more available equipment.



Please visit our web site www.slevysurplus.com for more available equipment.



OVERLOAD RELAY SETTING

This bimetallic ambient compensated overload relay has an adjustable FLA range between 0.254 and 32.0 amperes, depending upon which heater packs are installed. With proper heater selection, the overload relay will ultimately trip at 125% FLA for a 1.15 service factor motor and at 115% FLA for a 1.0 service factor motor.

HEATER SELECTION / INSTALLATION - Select the appropriate heater pack number which corresponds to the motor FLA rating for your application. Insert each heater into the overload relay and tighten heater mounting screws to 8 pound-inches of torque.

NOTE: A total of three individual heaters must be installed in order for the overload relay to work properly.

FLA ADJUSTMENT DIAL - For motors having a 1.15 service factor, rotate the FLA adjustment dial to correspond to the motor's FLA rating. Estimate the dial position when the motor FLA falls between two letter values as shown in the example.

For motors having a 1.0 service factor, rotate the FLA dial one-half position counterclockwise (CCW).

NOTE: After the above-referenced settings have been made, rotate the FLA dial one position clockwise for these heaters (see table). If less than one position is available, rotate dial to maximum. This note does not apply when these heaters are used with Catalog No. C306TB1 adapter base.

MANUAL / AUTOMATIC RESET - The overload relay is factory set at "M" for manual reset operation as shown in the illustration. For automatic reset operation, turn the reset adjustment dial to the "A" position.

Automatic reset is not intended for two-wire control devices.

Ce dispositif de reencenchement automatique ne convient pas aux commandes a deux conducteurs.

TEST FOR TRIP INDICATION - To test overload relay for trip indication when in manual reset, pull out the blue reset button. An orange flag will appear indicating that the device has tripped. Push reset button in to reset.

MAXIMUM RATINGS

| NEMA SIZE | AMPS | SIZE | AMPS |
|-----------|------|------|------|
| 00 | 9 | A | 7 |
| 0 | 16 | B | 10 |
| 1 | 27 | C | 12 |
| | | D | 16 |
| | | E | 25 |
| | | R | 32 |

* Size is fifth digit in catalog number
Example: AE16A0

HEATER PACK SELECTION TABLE

| MOTOR FLA RATING | | | | STD TRIP CLASS |
|--------------------|-----|-----|-----|----------------|
| FLA DIAL POSITIONS | | | | 20 |
| A | B | C | D | |
| 254 | 306 | 359 | 411 | H2001B |
| 375 | 452 | 530 | 607 | H2002B |
| 550 | 676 | 791 | 907 | H2003B |
| 814 | 983 | 115 | 132 | H2004B |
| 120 | 145 | 171 | 198 | H2005B |
| 179 | 216 | 253 | 290 | H2006B |
| 215 | 260 | 304 | 349 | H2007B |
| 323 | 390 | 456 | 523 | H2008B |
| 455 | 550 | 645 | 740 | H2009B |
| 675 | 817 | 958 | 110 | H2010B |
| 914 | 108 | 124 | 140 | H2011B |
| 140 | 169 | 199 | 228 | H2012B |
| 187 | 227 | 267 | 307 | H2013B |
| 235 | 285 | 335 | — | H2014B |

HEATER PACK SELECTION TABLE

| MOTOR FLA RATING | | | | STD TRIP CLASS |
|--------------------|-----|-----|-----|----------------|
| FLA DIAL POSITIONS | | | | 10 |
| A | B | C | D | |
| 260 | 313 | 367 | 420 | H2101B |
| 384 | 464 | 543 | 623 | H2102B |
| 570 | 688 | 806 | 924 | H2103B |
| 848 | 102 | 120 | 137 | H2104B |
| 128 | 155 | 183 | 210 | H2105B |
| 192 | 233 | 274 | 315 | H2106B |
| 230 | 279 | 328 | 377 | H2107B |
| 338 | 410 | 482 | 554 | H2108B |
| 496 | 603 | 709 | 816 | H2109B |
| 707 | 858 | 101 | 118 | H2110B |
| 960 | 112 | 128 | 144 | H2111B |
| 144 | 175 | 207 | 238 | H2112B |
| 187 | 218 | 250 | 281 | H2113B |
| 235 | 273 | 310 | 348 | H2114B |

RESET ADJUSTMENT DIAL

Example of setting for manual reset

WARNING - To provide continued protection against fire of burnout of the heater element occurs.

AVERTISSEMENT: Le relais de surcharge doit être remplacé si l'élément porteur est grille.

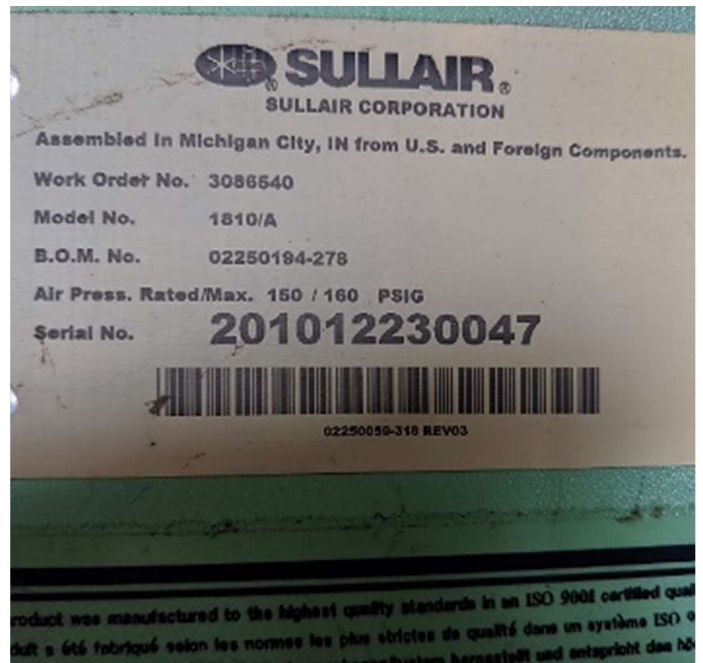
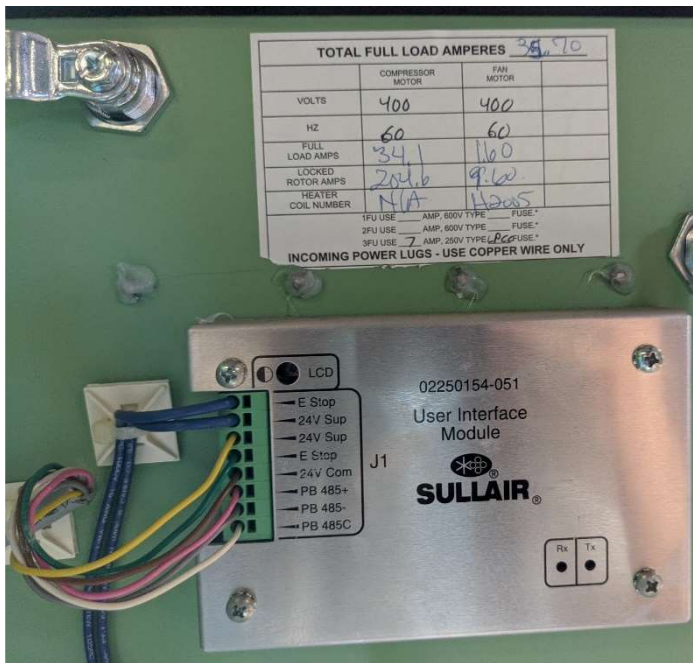
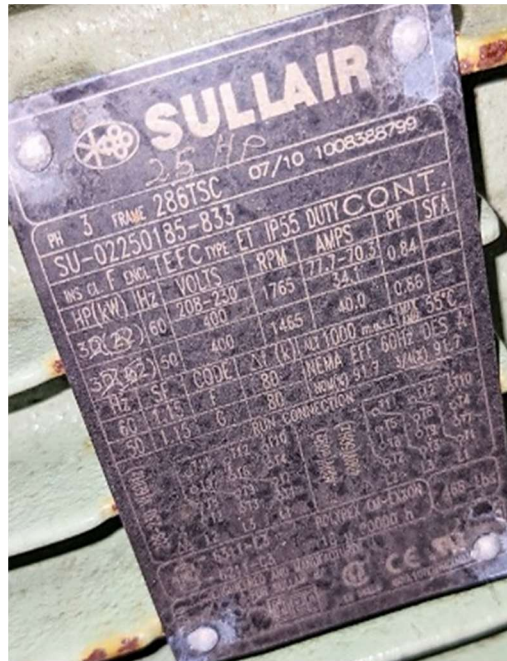
LOAD TERMINATION TIGHTENING TORQUE

20 Lb-In

Use 75°C copper conductors only

PUB22189 REV-1

Please visit our web site www.slevysurplus.com for more available equipment.



Please visit our web site www.slevysurplus.com for more available equipment.

SULLAIR
SULLAIR CORPORATION

Assembled in Michigan City, IN from U.S. and Foreign Components.

Work Order No. 3086536
Model No. 1810/A
B.O.M. No. 02250194-278
Air Press. Rated/Max. 150 / 160 PSIG
Serial No. **201012230045**

02250059-316 REV03

This product was manufactured to the highest quality standards in an ISO 9001 certified quality system.
Ce produit a été fabriqué selon les normes les plus strictes de qualité dans un système ISO 9001 certifié.
Produkt wurde in einem mit ISO 9001 Zertifiziert versehenen System hergestellt und entspricht den höchsten Qualitätsstandards.
Dette produkt er fremstillet i overensstemmelse med de strengeste kvalitetsnormer i et ISO 9001 - certificeret anlæg.

ISO 9001

Το προϊόν αυτό έχει κατασκευαστεί σύμφωνα με τις πλέον αυστηρές προδιαγραφές ποιότητας σε εγκατάσταση πιστοποιημένη με ISO 9001.
Dit produkt werd volgens de hoogste kwaliteitsnormen geproduceerd in een ISO 9001 gecertificeerd kwaliteitssysteem.
Este producto ha sido fabricado según los más altos estándares de calidad en un sistema con la certificación ISO 9001.

SULLAIR

MODEL: **SSD100-115V**
SERIAL NO.: **101001100**

101001100

| | | | |
|----------------|----------|-------|-------|
| MAX PSI | 150 PSIG | VOLT | 115 |
| MIN PSI | 80 | PHASE | 1 |
| INLET MAX TEMP | 120°F | HZ | 50/60 |
| CAPACITY | 107 | FLA | 1.0 |
| MAX FUSE | | 2 AMP | |

FOR SERVICE CALL 888-785-5247

SULLAIR

MODEL: **SSD100-115V**
SERIAL NO.: **100900933**

100900933

Heatless Desiccant Dryer

| | | | |
|----------------|----------|-------|-------|
| MAX PSI | 150 PSIG | VOLT | 115 |
| MIN PSI | 80 PSIG | PHASE | 1 |
| INLET MAX TEMP | 120°F | HZ | 50/60 |
| CAPACITY | 107 CFM | FLA | 1.0 |
| MAX FUSE | | 2 AMP | |

FOR SERVICE CALL 888-785-5247

Please visit our web site www.slevysurplus.com for more available equipment.

Tank #1

Silvan Industries Tank

Certified by: Silvan Industries

Year Built: 2017

Tank Length: approx. 97"

Tank Diameter: approx. 34" – 36"

Capacity: Approximately 400 gallons

Maximum allowable working pressure: 150 psi @ 400°

Condition: UNUSED SURPLUS

Bid: \$ _____



Please visit our web site www.slevysurplus.com for more available equipment.

Tank #2

Silvan Industries Tank

Certified by: Silvan Industries

Year Built: 2017

Tank Length: approx. 97"

Tank Diameter: approx. 34" – 36"

Capacity: Approximately 400 gallons

Maximum allowable working pressure: 150 psi @ 400°

Condition: UNUSED SURPLUS

Bid: \$ _____



Please visit our web site www.slevysurplus.com for more available equipment.